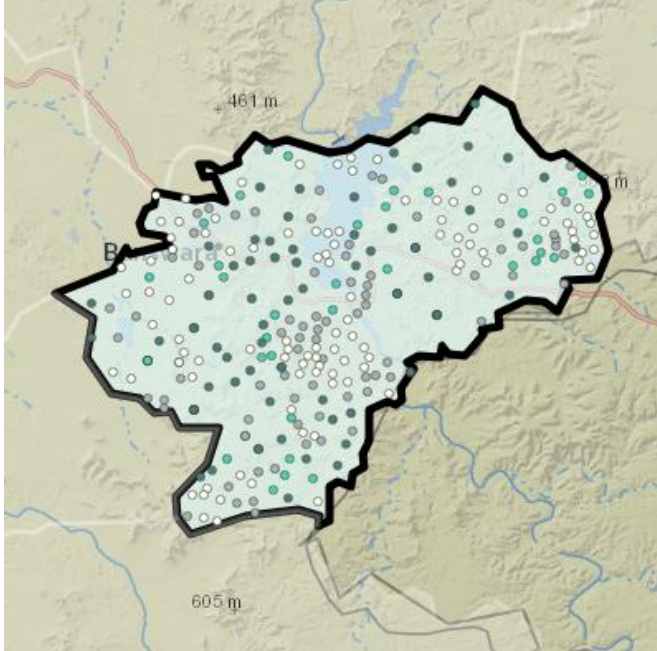


RAJASTHAN

BANSWARA (ST) Assembly Constituency

Potential for Forest Rights Act Implementation



This map and list of villages eligible for forest rights (individual and collective) under the Forest Rights Act seeks to inform the political parties and candidates about the importance of proper implementation of Forest Rights Act in this tribal and forest dweller dominated constituency. All the forest land within village boundaries should be recognized as Community Forest Resource rights (CFRs) and individual forest rights (where occupancy prior to 2005 existed) rights under the control of FRA Gram Sabhas.

The list of villages includes the number of total potential right's holder, SC Right's holder and ST Right's holders under Forest Rights Act, and the area of forests (minimum) where FRA rights are to be recognized.

Villages with less than 50 ha. (125 acres) under FRA	
Villages between 50-100 ha. (125-250 acres) under FRA	
Villages with more than 100 ha. (> 250 acres) under FRA	

The winning margin was around 30,061 in 2013, whereas there are at least 1, 15, 340 Potential FRA Right Holder Voters eligible for FRA rights recognition. The electoral data clearly shows that the political parties need to raise the issue of Forest Rights Act implementation on the ground.

Assembly Constituency FRA Potential Consolidated

Minimum number of villages having forests and eligible for FRA rights recognition	187
Total population of potential forest rights Act (FRA) rights holders in the Constituency	2,02,421
Number of Potential FRA right holder Voters Total	1,15,340
Number of potential SC FRA right holding Voters	3,148
Number of potential ST FRA right holding Voters	1,03,046
Total Area of forests eligible for recognition under Forest Rights Act	23,475Ha

BANSWARA: Election Results			
2013	BJP DHAN SINGH RAWAT 86,620	INC ARJUN SINGH BAMANIYA 56,559	JD(U) RAJESH KATARA 22,916
2008	INC ARJUN SINGH BAMANIYA 47,753	BJP DHANSINGH RAWAT 31,904	JD(U) RAJESH KATARA 20,402

Village Wise List of the potential rights recognition under Forest Rights Act (IFR and CFR)

Village Name	Assembly Constituency Name	Total Village population	SC FRA Right Holder	ST FRA Right Holder	Minimum Forest Area Eligible for Rights Settlement (Ha) as IFRs or CFRs
Kher Dabra	banswara(st)	2933	13	2920	206
Cheeb	banswara(st)	2144	13	2129	91
Siyari	banswara(st)	186	0	186	43
Jhamliya	banswara(st)	352	0	352	48
Khajuri	banswara(st)	2615	2	2610	605
Kuntabari	banswara(st)	672	0	661	169
Gagarwa	banswara(st)	1463	11	1450	420
Ghori	banswara(st)	1694	100	1569	218
Tejpur	banswara(st)	6503	686	5778	518
Doongra	banswara(st)	896	15	880	115
Kanpuri	banswara(st)	668	45	623	77
Theekariya	banswara(st)	687	0	687	53
Chhaliyawar	banswara(st)	1231	9	1216	80
Patinagra	banswara(st)	1756	27	1620	85
Bilakho	banswara(st)	352	0	350	96
Kotra	banswara(st)	1396	21	1363	277
Chacha Kota	banswara(st)	416	0	404	41
Bheemgarh	banswara(st)	98	0	98	8
Ala Prithvigarh	banswara(st)	607	0	605	199
Kakanseja	banswara(st)	1544	1	1536	273
Laxmangarh @ Jhari	banswara(st)	3549	0	3539	467
Uplaghantala	banswara(st)	1553	3	1543	80
Chaubison Ka Parda	banswara(st)	1607	0	1589	135
Dhamaniya	banswara(st)	661	0	661	2
Peepalwa	banswara(st)	1479	6	1445	9
Parla Ganeshilal	banswara(st)	833	0	824	23
Bari Siyatalai	banswara(st)	1449	12	1393	34
Tamtiya	banswara(st)	2112	161	987	10

Borkheri @ Chandraveergarh	banswara(st)	1084	1	1045	18
Malwasa	banswara(st)	3727	5	3419	146
Sagrod	banswara(st)	2837	182	1607	4
Saliya	banswara(st)	1998	409	424	16
Kankra	banswara(st)	1257	0	1254	81
Bodla	banswara(st)	1821	0	1303	4
Theekariya	banswara(st)	6460	804	2183	12
Leemkhora	banswara(st)	203	0	203	159
Bhapor	banswara(st)	1589	0	1574	99
Samaipura	banswara(st)	895	0	892	159
Sarwarpura	banswara(st)	651	0	647	117
Fatehpura	banswara(st)	704	0	701	235
Bortalab	banswara(st)	1544	105	1024	108
Kareliya	banswara(st)	954	5	946	192
Kundla Kalan	banswara(st)	584	0	584	251
Baroda	banswara(st)	1245	0	1244	224
Wank	banswara(st)	429	0	425	183
Beelriya	banswara(st)	146	0	143	1
Sajwaniya	banswara(st)	1003	1	1001	179
Chhapariya	banswara(st)	38	0	38	7
Lalpura	banswara(st)	309	0	309	40
Bari	banswara(st)	1536	13	1522	208
Danakshari	banswara(st)	1455	0	1455	156
Nagakhali	banswara(st)	435	0	435	10
Katumbi	banswara(st)	2152	0	2119	411
Hariyapada	banswara(st)	1932	0	1931	217
Kala Khet	banswara(st)	1264	91	1143	185
Kundal	banswara(st)	3626	275	3350	355
Makanpura	banswara(st)	1941	8	1925	341
Kelwani	banswara(st)	188	0	188	25
Jormiya	banswara(st)	182	0	181	77
Wara	banswara(st)	774	0	772	57
Koibao	banswara(st)	628	0	624	70
Daulatpura	banswara(st)	309	0	309	27
Lambi Sadar	banswara(st)	698	0	698	39
Ambawaj	banswara(st)	377	24	350	5
Harnathpura	banswara(st)	782	9	770	86
Roonjiya	banswara(st)	523	0	523	74
Roonjadipada	banswara(st)	472	0	469	39
Mokam Pura	banswara(st)	265	0	264	6
Detkeeya	banswara(st)	157	76	79	8
Hiriya Garhi	banswara(st)	882	0	880	85
Garh	banswara(st)	978	0	978	166
Jhanjhiyamal	banswara(st)	41	0	41	2

Wagtalab	banswara(st)	604	0	601	37
Sarwani	banswara(st)	1160	10	1150	96
Ambapara	banswara(st)	706	0	702	18
Karchhi	banswara(st)	611	0	603	87
Tamtiya	banswara(st)	388	10	377	70
Manpuri	banswara(st)	246	70	142	26
Danpur	banswara(st)	4811	346	3117	450
Peepli Para	banswara(st)	350	4	346	4
Phephar	banswara(st)	2797	0	2776	191
Umripada	banswara(st)	765	0	765	163
Amba Para	banswara(st)	962	0	960	121
Sarwan	banswara(st)	6138	250	5458	311
Deri	banswara(st)	2180	18	2159	605
Bhamariya Pada	banswara(st)	513	0	513	13
Pratap Nagar	banswara(st)	580	0	580	160
Adi Bheet	banswara(st)	924	20	903	60
Rel	banswara(st)	667	0	665	7
Napla	banswara(st)	1180	16	1153	1
Kikapara	banswara(st)	97	0	97	1
Talab	banswara(st)	659	0	659	1
Chitab	banswara(st)	200	0	200	6
Lodha Jageer	banswara(st)	564	7	502	99
Semliya	banswara(st)	280	0	280	57
Kundla Khurd	banswara(st)	1505	0	1502	218
Padla	banswara(st)	1189	0	1188	154
Kesarpura	banswara(st)	1553	0	1536	93
Samapara	banswara(st)	575	0	575	123
Khardeo	banswara(st)	591	0	590	9
Khandiya Deo	banswara(st)	732	0	732	5
Lodha Gariyan	banswara(st)	129	0	87	3
Abapura	banswara(st)	1663	0	714	39
Manpura	banswara(st)	286	0	286	26
Nawatapra Hira	banswara(st)	394	0	394	18
Pagari	banswara(st)	507	0	43	12
Bhatpura	banswara(st)	165	0	165	1
Salrapara	banswara(st)	170	0	170	1
Bakhatpura	banswara(st)	892	0	881	54
Khori Peepli	banswara(st)	514	1	507	7
Nathpura Khurd	banswara(st)	303	0	303	58
Kharwali	banswara(st)	552	5	547	127
Seengpura	banswara(st)	2840	0	2838	1293
Chhatrasalpura	banswara(st)	1503	59	1222	175
Nawa Gaon	banswara(st)	3421	265	1974	265
Damarwas	banswara(st)	303	0	302	166

Leemthan	banswara(st)	1491	0	1376	77
Sukhaniya	banswara(st)	3478	769	1341	44
Jagtarawat Ka Parda	banswara(st)	1092	0	1091	18
Gauwapara	banswara(st)	602	0	602	13
Samriya	banswara(st)	1674	0	1672	13
Rajeev Nagar	banswara(st)	1003	0	1002	231
Pratap Nagar	banswara(st)	1104	0	1104	66
Subhash Nagar	banswara(st)	1160	4	1154	14
Gandhi Nagar	banswara(st)	1299	0	1291	589
Sanga	banswara(st)	1084	4	1075	10
Jhoopel	banswara(st)	3403	8	3379	237
Bhojiya Kalan	banswara(st)	701	0	700	433
Rani Bani	banswara(st)	37	0	37	21
Nal	banswara(st)	1481	0	1476	368
Ganaoo	banswara(st)	2127	3	2111	318
Kalyanpura	banswara(st)	379	0	379	96
Badrel Jageer	banswara(st)	656	0	618	132
Charpota Para	banswara(st)	700	0	689	102
Bhojiya Khurd	banswara(st)	238	0	238	36
Gamda	banswara(st)	2138	316	1804	43
Veerpur	banswara(st)	1694	135	969	32
Kalanala	banswara(st)	543	0	542	64
Mediyadidor	banswara(st)	569	0	567	24
Nalda	banswara(st)	1905	2	1898	293
Nawa Khera	banswara(st)	2319	0	2313	844
Doriya Ki Rel	banswara(st)	621	1	618	30
Lala Ada	banswara(st)	661	0	661	21
Jambudor	banswara(st)	440	0	437	5
Bor Khabar	banswara(st)	1854	1	1848	66
Bhoot Para	banswara(st)	988	1	986	180
Saliya	banswara(st)	508	0	503	127
Gara	banswara(st)	706	0	703	47
Dabri Mal	banswara(st)	979	2	971	39
Detkiya Chhota	banswara(st)	410	0	393	9
Barwara Machhar	banswara(st)	737	1	732	31
Bheleeya Talab	banswara(st)	491	0	491	48
Bageri Charpota	banswara(st)	647	0	647	64
Barwara Bherooji	banswara(st)	533	0	528	16
Khalpur	banswara(st)	544	0	533	164
Thuriya Pada	banswara(st)	575	0	574	131
Bageri Hareg	banswara(st)	271	0	270	34
Bharatliya	banswara(st)	421	0	419	66
Bageri Maida	banswara(st)	517	1	516	78
Maheshpura	banswara(st)	2046	0	2038	369

Sakri Nal	banswara(st)	761	0	760	73
Barlipara Manji	banswara(st)	1148	0	1147	172
Ramgarh	banswara(st)	1171	1	1170	108
Sakarwat	banswara(st)	766	0	765	1
Rooparel	banswara(st)	610	0	606	32
Chapariya	banswara(st)	1442	0	1440	375
Dhawadadara	banswara(st)	250	0	249	25
Sangesari	banswara(st)	308	0	308	101
Anandpura	banswara(st)	694	0	694	17
Kaliyari	banswara(st)	889	0	889	167
Jharniya	banswara(st)	1615	2	1546	274
Mangaliya Khora	banswara(st)	238	0	238	13
Semla Para	banswara(st)	637	0	613	11
Semla Khora	banswara(st)	473	0	473	37
Palaswani	banswara(st)	597	0	177	10
Nathpura Kalan	banswara(st)	1249	0	1246	27
Nadiya	banswara(st)	1164	0	1156	323
Shakti Nagar	banswara(st)	812	22	790	118
Azad Nagar	banswara(st)	585	36	548	9
Ambakho	banswara(st)	486	1	479	254
		202421	5524	180844	22487