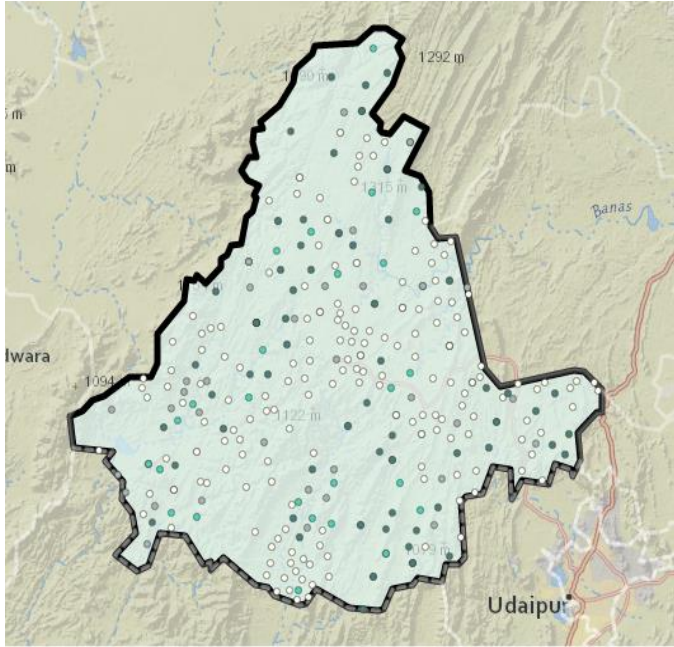


## RAJASTHAN

### GOGUNDA (ST) Assembly Constituency

#### Potential for Forest Rights Act Implementation



This map and list of villages eligible for forest rights (individual and collective) under the Forest Rights Act seeks to inform the political parties and candidates about the importance of proper implementation of Forest Rights Act in this tribal and forest dweller dominated constituency. All the forest land within village boundaries should be recognized as Community Forest Resource rights (CFRs) and individual forest rights (where occupancy prior to 2005 existed) rights under the control of FRA Gram Sabhas.

The list of villages includes the number of total potential right's holder, SC Right's holder and ST Right's holders under Forest Rights Act, and the area of forests (minimum) where FRA rights are to be recognized.

Villages with less than 50 ha. (125 acres) under FRA	
Villages between 50-100 ha. (125-250 acres) under FRA	
Villages with more than 100 ha. (> 250 acres) under FRA	

The winning margin was around 3,345 in 2013, whereas there are at least 85,137 Potential FRA Right Holder Voters eligible for FRA rights recognition. The electoral data clearly shows that the political parties need to raise the issue of Forest Rights Act implementation on the ground.

#### Assembly Constituency FRA Potential Consolidated

<b>Minimum number of villages having forests and eligible for FRA rights recognition</b>	<b>141</b>
<b>Total population of potential forest rights Act (FRA) rights holders in the Constituency</b>	<b>1,49,414</b>
<b>Number of Potential FRA right holder Voters Total</b>	<b>85,137</b>
<b>Number of potential SC FRA right holding Voters</b>	<b>4,401</b>
<b>Number of potential ST FRA right holding Voters</b>	<b>56,252</b>
<b>Total Area of forests eligible for recognition under Forest Rights Act</b>	<b>35,372 Ha</b>

<b>GOGUNDA: Election Results</b>			
<b>2013</b>	<b>BJP</b> PRATAP LAL BHEEL 69,210	<b>INC</b> MANGI LAL GARASIYA 65,865	<b>CPI</b> MEGRAJ TAWAD 6,416
<b>2008</b>	<b>INC</b> MANGI LAL GARASIYA 56,157	<b>BJP</b> HUNSA RAM GARASIYA 46,045	<b>IND</b> TEK CHAND BHIL 8,116

**Village Wise List of the potential rights recognition under Forest Rights Act (IFR and CFR)**

<b>Village Name</b>	<b>Assembly Constituency Name</b>	<b>Total Village population</b>	<b>SC FRA Right Holder</b>	<b>ST FRA Right Holder</b>	<b>Minimum Forest Area Eligible for Rights Settlement (Ha) as IFRs or CFRs</b>
Kunda	gogunda(st)	825	93	381	138
Ushan	gogunda(st)	2173	15	1313	215
Magha	gogunda(st)	865	0	714	517
Kamba	gogunda(st)	1314	6	855	165
Bagar	gogunda(st)	1203	0	828	53
Bhanpura	gogunda(st)	1761	116	911	182
Dhikora	gogunda(st)	1539	157	815	229
Koviya	gogunda(st)	717	0	521	242
Jorma	gogunda(st)	969	21	625	43
Bokhara	gogunda(st)	5327	333	4209	486
Sayra	gogunda(st)	2691	296	368	130
Bhaton Ka Sayra	gogunda(st)	1417	108	711	223
Ghanawal	gogunda(st)	1753	103	875	509
Odwadiya	gogunda(st)	486	0	484	49
Palasama	gogunda(st)	1585	85	788	46
Gujron Ka Guda	gogunda(st)	542	1	386	434
Gayphal	gogunda(st)	1371	56	852	58
Jemli	gogunda(st)	1646	518	353	47
Semar (B)	gogunda(st)	1032	60	931	433
Umarna	gogunda(st)	937	17	864	144
Jarga Amba	gogunda(st)	596	301	197	4
Kamol	gogunda(st)	2003	27	631	339
Borawali Madri	gogunda(st)	956	77	434	172
Royda	gogunda(st)	1809	414	716	1727
Gundali	gogunda(st)	1989	80	1291	184
Palachh	gogunda(st)	1390	30	669	69
Hathniyawal	gogunda(st)	964	41	596	421
Paner	gogunda(st)	1398	196	715	44
Thob	gogunda(st)	239	21	191	7

Guman	gogunda(st)	1506	22	1148	98
Dhol	gogunda(st)	2787	221	528	43
Umrod	gogunda(st)	854	65	427	60
Samal	gogunda(st)	1734	147	786	310
Vishma	gogunda(st)	1006	113	297	55
Padrara	gogunda(st)	3275	419	742	360
Hanyla	gogunda(st)	861	8	847	78
Cheetarawas	gogunda(st)	845	5	818	7
Sakariya	gogunda(st)	647	1	635	298
Karech	gogunda(st)	1504	0	1495	207
Reechwara	gogunda(st)	742	0	742	16
Palan	gogunda(st)	1047	1	1046	295
Munda-Ka-Khet	gogunda(st)	427	0	417	280
Kyar-Ka-Khet	gogunda(st)	631	1	629	194
Devranaman	gogunda(st)	427	0	427	314
Rawachh	gogunda(st)	2644	1	2621	692
Tegra	gogunda(st)	482	2	480	282
Kundalawas	gogunda(st)	701	0	701	235
Punawali	gogunda(st)	1878	346	481	32
Baguni	gogunda(st)	814	0	811	353
Nandeshma	gogunda(st)	2903	345	360	294
Bansliya	gogunda(st)	1063	76	703	18
Jelani	gogunda(st)	620	0	310	25
Jaswant Garh	gogunda(st)	3262	202	652	129
Obra Khurd	gogunda(st)	1371	257	505	73
Mori	gogunda(st)	1927	202	697	48
Majawari	gogunda(st)	1718	153	395	42
Motawida	gogunda(st)	653	0	622	20
Khakhri	gogunda(st)	888	72	467	99
Sooran	gogunda(st)	753	1	729	268
Seewariya	gogunda(st)	1224	0	1223	2199
Inton Ka Khet	gogunda(st)	602	1	599	1249
Undri	gogunda(st)	310	0	310	549
Behra	gogunda(st)	254	1	251	346
Mokhi	gogunda(st)	986	1	965	1151
Kundalwas	gogunda(st)	336	0	334	268
Nal	gogunda(st)	2679	1	2675	1609
Nathiyathal	gogunda(st)	440	0	440	902
Patiya	gogunda(st)	2044	36	1789	604
Modwa	gogunda(st)	1083	76	549	306
Deoron Ka Khera	gogunda(st)	743	43	301	309
Morwal	gogunda(st)	854	41	193	750
Solariya	gogunda(st)	570	0	387	58
Soorajgarh	gogunda(st)	1082	80	769	398

Delawas	gogunda(st)	971	0	841	414
Senwara	gogunda(st)	1396	61	891	1741
Bagdada	gogunda(st)	228	0	226	140
Chhali	gogunda(st)	1506	13	1087	584
Malariya Kalan	gogunda(st)	606	0	572	424
Mada	gogunda(st)	1973	112	983	250
Badoondiya	gogunda(st)	941	39	505	13
Kurdau	gogunda(st)	442	0	204	94
Majawad	gogunda(st)	1870	234	378	556
Bagdunda	gogunda(st)	2504	280	1054	20
Majam	gogunda(st)	1239	164	481	597
Bansra	gogunda(st)	403	0	231	38
Madarda	gogunda(st)	1799	20	1316	157
Naya Gurha	gogunda(st)	483	26	177	109
Bhadwi Gura	gogunda(st)	766	41	309	246
Kunti Ka Lewa	gogunda(st)	512	0	512	93
Pandlon Ka Chora	gogunda(st)	409	0	408	34
Padmaori	gogunda(st)	366	0	366	115
Palaya Peepla	gogunda(st)	390	0	386	11
Patiya	gogunda(st)	405	0	401	74
Ambawa	gogunda(st)	955	1	947	25
Nayawas	gogunda(st)	418	0	417	97
Hathni	gogunda(st)	266	1	210	85
Loro Ka Was	gogunda(st)	450	0	450	236
Padawali Kalan	gogunda(st)	1346	14	332	34
Lambi Semal	gogunda(st)	496	2	493	107
Mewaron Ka Math	gogunda(st)	1757	2	1697	174
Bosi	gogunda(st)	231	0	230	38
Salriya	gogunda(st)	813	0	799	120
Peepli Khera	gogunda(st)	580	0	579	83
Samel	gogunda(st)	269	0	255	41
Gadliya	gogunda(st)	320	0	320	194
Raneshji	gogunda(st)	971	0	968	587
Uplawas	gogunda(st)	736	4	726	62
Jar Ka Khadra	gogunda(st)	237	0	234	174
Biliya	gogunda(st)	81	0	81	15
Dang	gogunda(st)	322	0	322	95
Heral Kalan	gogunda(st)	227	0	227	40
Baniya War	gogunda(st)	120	0	120	15
Teja Ka Was	gogunda(st)	1946	5	1934	44
Bankawas	gogunda(st)	2016	20	1988	247
Tuli Ka Khet	gogunda(st)	514	0	514	17
Teebarni Ka Khet	gogunda(st)	249	0	249	85
Paoti Kalan	gogunda(st)	1216	0	1188	567

Paniyali	gogunda(st)	98	0	98	2
Peelka	gogunda(st)	436	0	435	80
Bekariya	gogunda(st)	3855	20	3777	460
Bhamra Khet	gogunda(st)	274	0	274	2
Sai Kalan	gogunda(st)	268	1	266	5
Raya	gogunda(st)	240	5	235	9
Kali Doongri	gogunda(st)	486	0	486	200
Jhari Royan	gogunda(st)	307	0	307	13
Kali Bor	gogunda(st)	176	0	176	55
Pandi Bor	gogunda(st)	837	11	800	107
Peepla	gogunda(st)	1369	0	1368	585
Kleem	gogunda(st)	651	8	643	1
Cheebar Badi	gogunda(st)	648	5	643	53
Malwiya	gogunda(st)	780	0	762	98
Kham	gogunda(st)	733	1	727	1
Jheendoli	gogunda(st)	918	39	726	192
Khuyanpura	gogunda(st)	819	10	804	29
Moriyon Ki Kariyan	gogunda(st)	869	71	237	112
Kumawation Ka Gurha	gogunda(st)	561	245	10	27
Doolawaton Ka Gurha	gogunda(st)	1348	150	811	185
Pawadiya	gogunda(st)	289	0	288	8
Paraya Ki Bhagal	gogunda(st)	411	0	385	143
Bhilwara	gogunda(st)	1951	0	1934	448
Kundal Ubeshwarji	gogunda(st)	671	6	394	429
		149414	7723	98721	35372