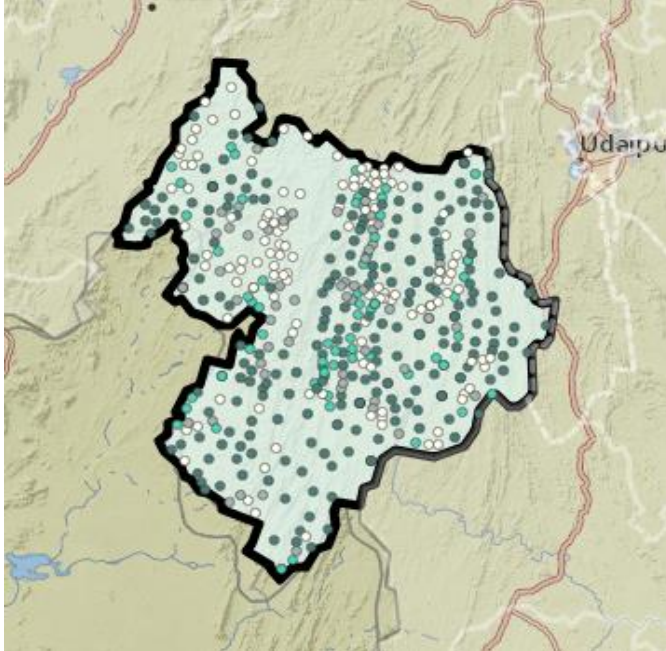


RAJASTHAN

JHADOL (ST) Assembly Constituency

Potential for Forest Rights Act Implementation



This map and list of villages eligible for forest rights (individual and collective) under the Forest Rights Act seeks to inform the political parties and candidates about the importance of proper implementation of Forest Rights Act in this tribal and forest dweller dominated constituency. All the forest land within village boundaries should be recognized as Community Forest Resource rights (CFRs) and individual forest rights (where occupancy prior to 2005 existed) rights under the control of FRA Gram Sabhas.

The list of villages includes the number of total potential right's holder, SC Right's holder and ST Right's holders under Forest Rights Act, and the area of forests (minimum) where FRA rights are to be recognized.

Villages with less than 50 ha. (125 acres) under FRA	
Villages between 50-100 ha. (125-250 acres) under FRA	
Villages with more than 100 ha. (> 250 acres) under FRA	

The winning margin was around 4,684 in 2013, whereas there are at least 2, 08, 111 Potential FRA Right Holder Voters eligible for FRA rights recognition. The electoral data clearly shows that the political parties need to raise the issue of Forest Rights Act implementation on the

ground.

Assembly Constituency FRA Potential Consolidated

Minimum number of villages having forests and eligible for FRA rights recognition	356
Total population of potential forest rights Act (FRA) rights holders in the Constituency	3,65,233
Number of Potential FRA right holder Voters Total	2,08,111
Number of potential SC FRA right holding Voters	3784
Number of potential ST FRA right holding Voters	1,76,774
Total Area of forests eligible for recognition under Forest Rights Act	1,16,403 Ha

JHADOL: Election Results			
2013	INC HEERALAL 67,354	BJP BABU LAL 62,670	NOTA NONE OF THE ABOVE 6,838
2008	BJP BABU LAL KHARADI 46,654	INC HEERA LAL 39,335	IND VIRAM CHAND 17,152

Village Wise List of the potential rights recognition under Forest Rights Act (IFR and CFR)

Village Name	Assembly Constituency Name	Total Village population	SC FRA Right Holder	ST FRA Right Holder	Minimum Forest Area Eligible for Rights Settlement (Ha) as IFRs or CFRs
Undithal	jhadol(st)	1724	91	1382	704
Kadechawas	jhadol(st)	315	5	42	172
Kara	jhadol(st)	974	6	964	8
Kara	jhadol(st)	909	0	909	197
Sari	jhadol(st)	428	0	428	165
Samoli	jhadol(st)	1441	536	776	1199
Phidooli Thal	jhadol(st)	79	0	79	70
Jaleri	jhadol(st)	91	0	91	65
Khuna	jhadol(st)	926	0	917	757
Gara	jhadol(st)	687	0	687	576
Gura	jhadol(st)	933	1	928	455
Beradhar	jhadol(st)	194	0	194	127
Bekariya War	jhadol(st)	613	3	609	409
Sulao	jhadol(st)	1567	5	1551	486
Mahula	jhadol(st)	559	0	555	180
Ranora	jhadol(st)	216	0	215	110
Kyara	jhadol(st)	1252	5	1246	401
Teensara	jhadol(st)	311	1	297	250
Nali Talab	jhadol(st)	1647	0	1641	200
Khadra	jhadol(st)	311	0	308	601
Nadi Phala	jhadol(st)	1078	0	1075	297
Mandwa	jhadol(st)	1211	0	1197	318
Bhoori Dhebar	jhadol(st)	244	0	242	69
Bhata Ka Pani	jhadol(st)	487	0	480	74
Royni	jhadol(st)	221	1	212	85
Jher	jhadol(st)	2939	1	2921	479
Kookawas	jhadol(st)	1319	0	1315	219
Adavela	jhadol(st)	1275	0	1267	266
Khanpa	jhadol(st)	1193	0	1186	625

Parlai	jhadol(st)	884	0	883	656
Khara	jhadol(st)	270	0	269	172
Kutar Mariya	jhadol(st)	621	0	619	425
Padli	jhadol(st)	411	0	411	219
Bujha	jhadol(st)	1704	0	1697	505
Bakhel	jhadol(st)	2660	7	2590	161
Ajni	jhadol(st)	1038	0	1037	81
Thep	jhadol(st)	1893	43	1848	498
Khajooriya	jhadol(st)	186	0	181	16
Kagwas	jhadol(st)	1839	0	1804	512
Kodarmal	jhadol(st)	1314	0	1305	194
Nayawas Sera	jhadol(st)	285	0	285	27
Chhapar	jhadol(st)	1076	0	1037	141
Chhapariya	jhadol(st)	523	0	523	212
Bikarni	jhadol(st)	1025	148	314	99
Seermi Tankri	jhadol(st)	215	7	194	22
Goriya	jhadol(st)	650	0	646	129
Kala Khetar	jhadol(st)	1151	2	1149	4
Adiseri	jhadol(st)	270	0	270	15
Punawali	jhadol(st)	405	0	403	32
Nichli Kundal	jhadol(st)	425	0	425	21
Upli Kundal	jhadol(st)	528	0	526	33
Darmiyama	jhadol(st)	580	0	576	27
Ariwara	jhadol(st)	463	0	462	2
Gujari	jhadol(st)	341	0	339	10
Beelwan	jhadol(st)	1701	2	1651	103
Sarli	jhadol(st)	632	5	620	20
Palesar	jhadol(st)	965	22	775	50
Dhadhamta	jhadol(st)	690	0	688	57
Sandmariya	jhadol(st)	485	0	485	42
Koliya	jhadol(st)	1750	0	1737	591
Vagawat	jhadol(st)	1387	0	1378	109
Vera Katar	jhadol(st)	1439	0	1438	41
Khodi Badli	jhadol(st)	695	0	695	23
Aamliya	jhadol(st)	673	0	673	4
Naya Was	jhadol(st)	5210	1	5191	419
Sondraf	jhadol(st)	1855	0	1855	305
Gandhi Sarna	jhadol(st)	2549	0	2517	184
Nichli Subri	jhadol(st)	2173	3	2144	20
Lamba Haldoo	jhadol(st)	624	0	620	30
Nichli Thala	jhadol(st)	708	0	704	50
Upla Thala	jhadol(st)	867	0	866	50
Dhedmariya	jhadol(st)	1559	0	1555	88
Gura	jhadol(st)	1540	0	1504	274

Chak Karwa Mahua	jhadol(st)	64	0	64	4
Pathar Pari	jhadol(st)	2256	4	2245	99
Arjunpura	jhadol(st)	195	0	195	22
Dungariya	jhadol(st)	1026	0	990	1426
Choki	jhadol(st)	233	1	231	1197
Wali	jhadol(st)	358	0	353	383
Kundal	jhadol(st)	733	0	733	166
Barli	jhadol(st)	1821	0	1819	365
Choki Magri	jhadol(st)	279	0	273	54
Gau Peepla	jhadol(st)	2776	1	2689	164
Boti Kalan	jhadol(st)	1192	0	1189	440
Khankhariya	jhadol(st)	602	0	602	180
Kanjawa	jhadol(st)	302	0	302	47
Talab	jhadol(st)	875	0	874	361
Khachan	jhadol(st)	277	0	276	513
Poptali	jhadol(st)	432	0	431	414
Godalwara	jhadol(st)	488	0	487	174
Boti Khurd	jhadol(st)	448	0	448	303
Biyol	jhadol(st)	897	0	897	80
Mahari	jhadol(st)	4565	3	4463	1338
Lunk	jhadol(st)	1605	0	1583	384
Sara	jhadol(st)	4245	1	4196	1356
Nal	jhadol(st)	838	1	835	955
Shishviya	jhadol(st)	603	0	593	395
Umariya	jhadol(st)	730	0	715	699
Lohari	jhadol(st)	569	0	569	884
Ambadeh	jhadol(st)	1290	1	1288	916
Meri	jhadol(st)	1437	0	1415	486
Ghoramari	jhadol(st)	1115	0	1100	52
Dehri	jhadol(st)	1603	2	1596	38
Sawan Ka Kyara	jhadol(st)	2029	1	2018	463
Rajpur	jhadol(st)	1177	0	1174	54
Bali Charni	jhadol(st)	1183	0	1180	94
Gura	jhadol(st)	2154	0	2104	45
Wasela	jhadol(st)	1264	0	1241	303
Mandwal	jhadol(st)	2530	1	2513	77
Cheekhli	jhadol(st)	1238	0	1238	204
Budhiya	jhadol(st)	2759	0	2746	480
Loona	jhadol(st)	458	1	457	241
Morchhuchha	jhadol(st)	1771	0	1747	188
Amri	jhadol(st)	967	0	966	157
Mahad	jhadol(st)	1952	2	1930	436
Mamer	jhadol(st)	3895	0	3829	711
Nakola	jhadol(st)	827	0	816	588

Bheem Talai	jhadol(st)	293	0	290	552
Hansreta	jhadol(st)	631	0	629	282
Koldara	jhadol(st)	253	0	253	409
Bao Veeran	jhadol(st)	68	0	68	775
Amba	jhadol(st)	167	0	167	461
Manasi	jhadol(st)	328	0	328	951
Asawara	jhadol(st)	798	0	792	1010
Kharawani	jhadol(st)	273	1	271	257
Bera Dhar	jhadol(st)	794	86	705	48
Dotar	jhadol(st)	699	0	694	3
Khokhra	jhadol(st)	925	0	923	40
Doongariyawas	jhadol(st)	279	0	277	54
Nandiya	jhadol(st)	243	0	184	135
Chauhanwas	jhadol(st)	564	0	55	62
Bhoora	jhadol(st)	862	84	59	75
Chokhalabara	jhadol(st)	1219	0	1212	751
Salar	jhadol(st)	742	0	740	923
Dhadhawali	jhadol(st)	2069	0	2032	1155
Akodara	jhadol(st)	394	0	384	312
Nandvel	jhadol(st)	1006	30	681	450
Dewas	jhadol(st)	1628	154	896	555
Mundawali	jhadol(st)	761	35	721	306
Talai	jhadol(st)	1547	0	1540	374
Chandwas	jhadol(st)	882	1	476	34
Malpur	jhadol(st)	666	37	249	218
Mohammad Phalasiya	jhadol(st)	3091	2	3037	1339
Netaji Ka Bara	jhadol(st)	913	0	911	828
Peepal Bara	jhadol(st)	286	0	286	94
Ogna	jhadol(st)	3012	578	322	240
Sankhala	jhadol(st)	237	34	60	1
Uchhati Beri	jhadol(st)	58	0	58	17
Bansriya	jhadol(st)	253	0	233	51
Kolar	jhadol(st)	464	0	463	890
Kundal	jhadol(st)	481	0	472	13
Peelak	jhadol(st)	1056	0	1050	1511
Darmiya	jhadol(st)	598	0	598	543
Napadevi	jhadol(st)	189	0	189	114
Mohani	jhadol(st)	479	0	478	121
Kumarwas	jhadol(st)	336	0	164	48
Ajaipura	jhadol(st)	507	0	503	30
Kapayavas	jhadol(st)	302	0	291	38
Kada	jhadol(st)	1722	1	1711	555
Bhawariya	jhadol(st)	488	0	488	600
Dhooli Bhakhri	jhadol(st)	183	0	183	80

Ranpur	jhadol(st)	1116	0	1114	237
Kyariya	jhadol(st)	539	0	525	494
Khuda	jhadol(st)	210	0	182	34
Wangli	jhadol(st)	511	22	335	49
Dheemri	jhadol(st)	394	0	356	24
Jawariya	jhadol(st)	118	0	118	41
Galdar	jhadol(st)	856	9	763	437
Sandmari	jhadol(st)	261	0	105	76
Ambawi	jhadol(st)	552	0	549	183
Upreta	jhadol(st)	1922	0	1539	1099
Amarpura	jhadol(st)	1067	103	934	481
Badrana	jhadol(st)	1273	95	615	130
Khakhara Khera	jhadol(st)	373	55	142	75
Nandela	jhadol(st)	337	0	337	42
Salukhera	jhadol(st)	701	12	287	172
Sarna	jhadol(st)	211	0	201	169
Chechlaya	jhadol(st)	836	0	830	209
Gorana	jhadol(st)	3168	113	1437	1099
Godwa	jhadol(st)	444	0	419	194
Pipali Magri	jhadol(st)	562	0	562	107
Adol	jhadol(st)	881	0	873	51
Chhatardi	jhadol(st)	426	0	111	372
Velniya	jhadol(st)	584	0	310	88
Jhadol	jhadol(st)	5026	474	1661	675
Godana	jhadol(st)	1064	135	277	114
Nayarahat	jhadol(st)	654	0	652	141
Gogla Ki Nal	jhadol(st)	578	0	570	385
Lakha Gurha	jhadol(st)	721	0	719	166
Jhanjhar Ki Pal	jhadol(st)	1738	0	1734	616
Kitawaton Ka Was	jhadol(st)	921	0	755	160
Kakarmala	jhadol(st)	858	0	630	110
Kaliya Ghati	jhadol(st)	774	0	774	47
Gejvi	jhadol(st)	1170	6	1147	444
Kakan Majra Pilak	jhadol(st)	59	0	59	339
Jetiwara	jhadol(st)	495	0	487	578
Heeromala	jhadol(st)	235	2	228	32
Benagiya	jhadol(st)	348	0	343	7
Dabla	jhadol(st)	226	0	120	186
Jurli	jhadol(st)	259	0	179	210
Bansiwara	jhadol(st)	1036	102	75	1096
Biroti	jhadol(st)	1418	179	205	288
Nayagaon	jhadol(st)	1135	46	1039	232
Bhakoomba	jhadol(st)	538	45	335	140
Dob	jhadol(st)	414	152	7	131

Adiwas	jhadol(st)	565	0	189	204
Kaligar	jhadol(st)	434	0	434	50
Ora	jhadol(st)	1158	146	318	50
Sahiwara	jhadol(st)	455	42	412	85
Atwal	jhadol(st)	498	20	28	215
Parda	jhadol(st)	129	0	129	23
Rohimala	jhadol(st)	722	61	7	17
Palkhuna	jhadol(st)	51	0	51	70
Kurawali Khurd	jhadol(st)	119	0	63	26
Barbali	jhadol(st)	795	0	791	3
Looniyara	jhadol(st)	1687	92	966	553
Keerat	jhadol(st)	306	0	298	725
Naya Gaon	jhadol(st)	1007	122	390	485
Damana Talab	jhadol(st)	882	0	877	387
Damana	jhadol(st)	1180	0	728	409
Magwas	jhadol(st)	1919	255	907	27
Bodi Magari	jhadol(st)	692	62	629	37
Khakhar	jhadol(st)	2361	38	1459	437
Sultanji Ka Kherwara	jhadol(st)	1793	11	614	334
Wagra	jhadol(st)	395	0	392	160
Kochla	jhadol(st)	1991	15	1554	270
Kupa Chaoki	jhadol(st)	41	0	32	88
Shivpura	jhadol(st)	673	0	672	136
Jotana	jhadol(st)	718	0	712	746
Bari	jhadol(st)	537	0	527	521
Paliya Khera	jhadol(st)	844	0	837	367
Idmal	jhadol(st)	624	0	623	792
Saldari	jhadol(st)	853	17	829	216
Selana	jhadol(st)	2031	68	1951	437
Banswari	jhadol(st)	1134	0	753	46
Chatarpura	jhadol(st)	1378	0	1358	650
Dheemri	jhadol(st)	1065	0	693	68
Makradeo	jhadol(st)	2315	4	2297	227
Palawara	jhadol(st)	864	0	864	237
Chauki	jhadol(st)	210	0	209	263
Sera	jhadol(st)	2144	14	2124	2706
Teendor	jhadol(st)	563	0	558	307
Jekra	jhadol(st)	1291	0	998	514
Manas	jhadol(st)	2169	50	1730	191
Baghpura	jhadol(st)	2576	128	851	168
Vadad	jhadol(st)	911	0	644	174
Lunawaton Ka Khera	jhadol(st)	1722	0	1219	134
Kanthariya	jhadol(st)	1638	57	1171	99
Parevi	jhadol(st)	1428	0	1420	209

Adkaliya	jhadol(st)	1192	0	436	129
Khardiya	jhadol(st)	1799	0	1794	398
Godawara	jhadol(st)	1000	0	1000	418
Semla	jhadol(st)	310	0	310	94
Thariveri	jhadol(st)	296	0	296	1
Amod	jhadol(st)	1738	15	288	1059
Jhakra	jhadol(st)	299	0	291	343
Deorawas	jhadol(st)	504	136	265	18
Jalampura	jhadol(st)	571	0	542	93
Kolyari	jhadol(st)	2876	183	732	406
Newaj	jhadol(st)	1020	0	652	135
Bitta	jhadol(st)	266	0	266	86
Gamri	jhadol(st)	577	0	236	1289
Kunda	jhadol(st)	68	0	68	218
Adkaliya	jhadol(st)	1288	82	767	69
Nalannama	jhadol(st)	731	0	730	175
Amleta	jhadol(st)	414	0	411	57
Khairad	jhadol(st)	477	0	457	51
Ghori Mari	jhadol(st)	372	1	370	164
Dolriya	jhadol(st)	938	20	905	131
Bhagorawas	jhadol(st)	413	2	407	61
Ajroli Dhoolji	jhadol(st)	353	2	348	88
Ajroli Khas	jhadol(st)	432	0	35	157
Ajroli Daulji	jhadol(st)	185	79	65	88
Surimala	jhadol(st)	265	3	141	127
Burawara	jhadol(st)	365	2	293	148
Vayawara	jhadol(st)	296	3	292	83
Gurad	jhadol(st)	637	226	390	150
Bobrawara	jhadol(st)	425	1	417	42
Kochariya	jhadol(st)	87	0	87	14
Adalakar	jhadol(st)	469	49	418	40
Dhala	jhadol(st)	1504	0	1504	401
Turgarh	jhadol(st)	1178	0	998	269
Tumdar	jhadol(st)	1227	0	1210	168
Shyampura Kalan	jhadol(st)	668	0	654	154
Shyampura Khurd	jhadol(st)	152	0	62	20
Naya Khola	jhadol(st)	1104	0	1060	121
Bichhiwara	jhadol(st)	2951	80	769	137
Bada Bhilwara	jhadol(st)	731	0	714	575
Nala Bada	jhadol(st)	1044	0	1038	1033
Madri	jhadol(st)	1748	175	760	380
Pargiya Para	jhadol(st)	1583	10	1568	719
Jagannathpura	jhadol(st)	728	8	710	113
Nichli Goran	jhadol(st)	595	0	595	123

Goran	jhadol(st)	1740	56	1462	61
Saradeet	jhadol(st)	1386	7	1377	18
Rop	jhadol(st)	453	0	451	55
Reechhawar	jhadol(st)	1850	0	1459	148
Beranpara	jhadol(st)	2157	0	2156	197
Khatikamdi	jhadol(st)	1638	20	1557	57
Balvi Baroliya	jhadol(st)	2082	2	2057	333
Leelri	jhadol(st)	584	0	583	541
Nalachhota	jhadol(st)	648	0	645	151
Phalasiya	jhadol(st)	3257	211	1017	196
Patiya	jhadol(st)	746	0	673	188
Bassi	jhadol(st)	511	1	314	18
Vachli Katar	jhadol(st)	1144	21	1058	102
Amaliya	jhadol(st)	2194	0	2190	287
Phutan	jhadol(st)	1104	0	1101	246
Kherad	jhadol(st)	492	0	492	227
Bhesana	jhadol(st)	730	7	722	225
Manpur	jhadol(st)	781	3	287	78
Panarwa	jhadol(st)	1441	81	1158	2981
Khajurna	jhadol(st)	221	0	221	63
Upla Amda	jhadol(st)	1267	0	1265	324
Amra	jhadol(st)	1245	3	1013	20
Mandwa	jhadol(st)	750	0	733	1019
Dharawan	jhadol(st)	1888	9	1857	759
Adahaldoo	jhadol(st)	130	0	129	826
Chhali Bokra	jhadol(st)	1154	0	1143	1581
Ambasa	jhadol(st)	3511	20	2708	1902
Regrana	jhadol(st)	395	0	395	51
Bahighatiya	jhadol(st)	1129	0	1125	51
Daiya	jhadol(st)	1641	87	1407	99
Sandawara	jhadol(st)	285	0	268	32
Bujha	jhadol(st)	1330	62	1260	280
Hundla	jhadol(st)	711	0	708	191
Tindori	jhadol(st)	811	2	801	664
Kawel	jhadol(st)	1067	0	1033	1043
Mal	jhadol(st)	695	2	691	1254
Sarwan	jhadol(st)	1185	0	792	1712
Ambawi	jhadol(st)	1195	2	1078	1799
Lathooni	jhadol(st)	1365	0	1365	296
Som	jhadol(st)	2433	1	2385	975
Karel	jhadol(st)	2767	31	2431	212
Nichli Sigari	jhadol(st)	3649	103	3402	520
Bhamti	jhadol(st)	1185	4	981	587
Suali	jhadol(st)	1333	0	1197	237

Upli Sigari	jhadol(st)	1981	0	1904	30
Jamun	jhadol(st)	1405	3	1392	329
Madla	jhadol(st)	1483	0	1479	57
Bijli	jhadol(st)	1281	0	1278	222
Lamba Dhawada	jhadol(st)	643	0	643	476
Dodawali	jhadol(st)	1706	4	1418	240
Karnali	jhadol(st)	952	0	738	59
Surana	jhadol(st)	670	0	182	100
Borao Ka Khera	jhadol(st)	224	0	189	30
Bachhar	jhadol(st)	1820	0	1807	621
Madri	jhadol(st)	776	0	776	109
Keli	jhadol(st)	527	0	495	226
Pai	jhadol(st)	4558	50	4437	1571
Khajoori	jhadol(st)	2589	9	2578	763
Borikuwa	jhadol(st)	1407	54	1339	604
		364262	6641	310237	115889