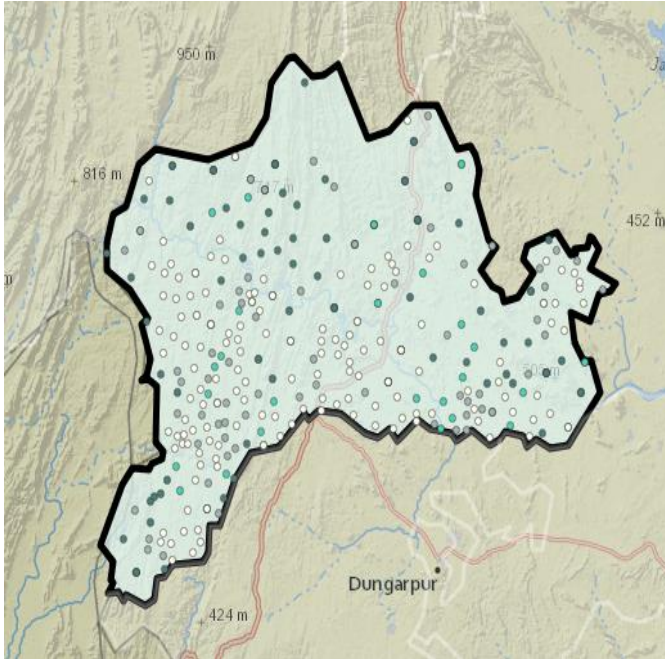


RAJASTHAN

KHERWARA (ST) Assembly Constituency

Potential for Forest Rights Act Implementation



This map and list of villages eligible for forest rights (individual and collective) under the Forest Rights Act seeks to inform the political parties and candidates about the importance of proper implementation of Forest Rights Act in this tribal and forest dweller dominated constituency. All the forest land within village boundaries should be recognized as Community Forest Resource rights (CFRs) and individual forest rights (where occupancy prior to 2005 existed) rights under the control of FRA Gram Sabhas.

The list of villages includes the number of total potential right's holder, SC Right's holder and ST Right's holders under Forest Rights Act, and the area of forests (minimum) where FRA rights are to be recognized.

Villages with less than 50 ha. (125 acres) under FRA	
Villages between 50-100 ha. (125-250 acres) under FRA	
Villages with more than 100 ha. (> 250 acres) under FRA	

The winning margin was around 11,166 in 2013, whereas there are at least 2, 38, 333 Potential FRA Right Holder Voters eligible for FRA rights recognition. The electoral data clearly shows that the political parties need to raise the issue of Forest Rights Act implementation on the

ground.

Assembly Constituency FRA Potential Consolidated

Minimum number of villages having forests and eligible for FRA rights recognition	186
Total population of potential forest rights Act (FRA) rights holders in the Constituency	2,38,333
Number of Potential FRA right holder Voters Total	1,35,803
Number of potential SC FRA right holding Voters	4007
Number of potential ST FRA right holding Voters	1,10,933
Total Area of forests eligible for recognition under Forest Rights Act	35,109 Ha

KHERWARA: Election Results			
2013	BJP NANA LAL AHARI 84,845	INC DAYARAM 73,679	NOTA NONE OF THE ABOVE 5,978
2008	INC DAYARAM PARMAR 68,702	BJP NANA LAL AHARI 53,945	IND PREM KUMAR LIMBAT 7,590

Village Wise List of the potential rights recognition under Forest Rights Act (IFR and CFR)

Village Name	Assembly Constituency Name	Total Village population	SC FRA Right Holder	ST FRA Right Holder	Minimum Forest Area Eligible for Rights Settlement (Ha) as IFRs or CFRs
Nenbara	kherwara(st)	2443	12	2251	1792
Garanwas	kherwara(st)	2374	27	1875	1779
Nichli Kwadar	kherwara(st)	1301	14	975	969
Kwadar	kherwara(st)	708	0	706	287
Damana	kherwara(st)	759	4	755	86
Peepalbara	kherwara(st)	1145	32	1006	1080
Kanakpura	kherwara(st)	479	0	469	155
Barothi	kherwara(st)	898	34	859	46
Parai	kherwara(st)	1376	22	1330	177
Banal	kherwara(st)	822	0	816	138
Kharbar Chak (A)	kherwara(st)	2046	112	1928	66
Gadlas	kherwara(st)	428	0	428	31
Kharbar Chak (B)	kherwara(st)	1700	0	1694	49
Pal Sarada	kherwara(st)	3707	64	3608	39
Udai Phala	kherwara(st)	1062	11	1050	294
Bera Balua	kherwara(st)	2321	0	2320	21
Balua	kherwara(st)	2598	90	2088	46
Hari Doongri	kherwara(st)	1000	1	985	154
Upla Fala Sadkari	kherwara(st)	2526	2	2521	34
Ambara	kherwara(st)	728	1	633	30
Khar	kherwara(st)	1348	0	1346	45
Karan Puriya	kherwara(st)	998	0	998	25
Bheempur	kherwara(st)	594	32	86	42
Wali	kherwara(st)	803	5	798	20
Khakhariya	kherwara(st)	639	13	619	20
Kunda	kherwara(st)	2441	248	833	151
Jatfala	kherwara(st)	687	0	687	28
Ghorasar	kherwara(st)	895	0	895	273
Nevafala	kherwara(st)	471	0	471	64

Nala Phala	kherwara(st)	1449	6	1443	350
Tokar	kherwara(st)	2896	322	542	84
Kundal	kherwara(st)	763	0	652	302
Pipala Bhatra	kherwara(st)	1228	0	949	28
Shaktawaton Ka Gurha	kherwara(st)	1918	43	1159	62
Ghata	kherwara(st)	1772	0	1770	146
Bhorai	kherwara(st)	2366	106	2169	126
Adarsh Nagar	kherwara(st)	2404	2	2350	447
Khad	kherwara(st)	1088	54	1034	106
Jambora	kherwara(st)	1201	6	1193	90
Jambuda Ghata	kherwara(st)	889	7	881	106
Daben	kherwara(st)	406	0	400	75
Ranya	kherwara(st)	390	0	387	36
Kanji	kherwara(st)	698	1	695	4
Sagwara	kherwara(st)	546	0	545	548
Samret	kherwara(st)	537	0	535	5
Phutala Samreth	kherwara(st)	1132	0	1124	730
Kankan	kherwara(st)	1199	35	1164	518
Gadawan Kakan	kherwara(st)	1925	43	1843	177
Amba Umriya	kherwara(st)	767	0	766	664
Magra	kherwara(st)	1358	0	1356	2222
Pareda	kherwara(st)	2507	136	1835	426
Pareda Chak No. 1	kherwara(st)	347	0	347	24
Kojawara	kherwara(st)	3081	102	1934	848
Jalpaka	kherwara(st)	1601	12	1571	772
Damatalab	kherwara(st)	1587	20	1496	440
Nalapeepla	kherwara(st)	562	0	562	196
Pacha Padla	kherwara(st)	1000	0	998	215
Mal	kherwara(st)	682	0	681	207
Ramabaori	kherwara(st)	671	0	664	240
Kharadi Phalan	kherwara(st)	516	0	488	130
Paderi	kherwara(st)	1068	159	219	2
Garasiya Phalan	kherwara(st)	704	10	683	170
Bhoodar	kherwara(st)	3184	87	2404	57
Godpada	kherwara(st)	685	0	684	219
Magra Bavsi	kherwara(st)	1470	0	1466	255
Chitrod	kherwara(st)	797	0	796	223
Peepli (A)	kherwara(st)	2367	23	2293	520
Vav	kherwara(st)	1101	40	1054	270
Peepli (B)	kherwara(st)	2017	110	1811	331
Naglai	kherwara(st)	686	0	686	10
Kalaliyakad	kherwara(st)	415	1	414	5
Somawat	kherwara(st)	3887	132	3679	673
Keekawat	kherwara(st)	2579	6	2391	30

Ugmana Kotra	kherwara(st)	2781	4	2774	103
Garnala Kotra	kherwara(st)	2743	6	2734	57
Rayana	kherwara(st)	890	7	816	110
Chikla	kherwara(st)	1535	3	1366	28
Kanuwara	kherwara(st)	1859	31	1784	93
Kesarpura	kherwara(st)	275	0	271	4
Karji	kherwara(st)	1030	96	825	86
Ghoriyawara	kherwara(st)	1244	0	1244	111
Rajol	kherwara(st)	2606	13	2592	352
Kalyanpur	kherwara(st)	2218	255	96	116
Nichli Katev	kherwara(st)	1262	44	1215	36
Kateo	kherwara(st)	1817	59	1651	119
Manpura	kherwara(st)	222	0	221	5
Mahoowara	kherwara(st)	878	21	822	7
Chorai	kherwara(st)	2182	2	2065	60
Beechhiwara	kherwara(st)	1884	61	1822	143
Odwas	kherwara(st)	2182	33	2106	608
Nichla Mandwa	kherwara(st)	1380	3	1370	66
Panisala	kherwara(st)	21	0	21	24
Babrikhara	kherwara(st)	85	0	41	62
Ora	kherwara(st)	293	0	267	11
Gumanpura	kherwara(st)	2830	4	2818	79
Dhelana	kherwara(st)	2212	1	2099	82
Bhaloon	kherwara(st)	749	2	746	15
Pagara	kherwara(st)	368	23	210	20
Depur	kherwara(st)	1961	3	1930	43
Amarpura	kherwara(st)	1303	7	1275	15
Pandyawara	kherwara(st)	701	12	325	52
Kanpur	kherwara(st)	516	141	296	30
Pahara	kherwara(st)	1097	30	838	21
Samlaipanwa	kherwara(st)	699	0	640	639
Mhuwal Magra	kherwara(st)	847	0	838	17
Magra	kherwara(st)	746	0	733	15
Umra	kherwara(st)	337	0	337	1
Bhalai	kherwara(st)	1079	0	1072	142
Bhakhra	kherwara(st)	1584	82	702	555
Ranawara	kherwara(st)	1262	1	379	242
Garaja	kherwara(st)	748	0	319	157
Mahuriya	kherwara(st)	1194	0	1174	277
Akot	kherwara(st)	719	0	719	251
Padaliya	kherwara(st)	627	0	624	160
Katvi	kherwara(st)	1279	104	1096	245
Choki	kherwara(st)	1014	45	852	301
Subedra	kherwara(st)	803	1	775	37

Bawal Wara	kherwara(st)	2755	149	1296	143
Samroon	kherwara(st)	1009	0	911	32
Khunadari	kherwara(st)	611	0	228	92
Mokarwara	kherwara(st)	355	0	133	16
Khera Jageer	kherwara(st)	392	0	389	50
Heeka	kherwara(st)	1002	0	1002	20
Saroli	kherwara(st)	1001	44	709	128
Banibor	kherwara(st)	1248	0	1095	132
Jawas	kherwara(st)	1342	4	36	177
Samiter	kherwara(st)	1492	41	1290	48
Suberi	kherwara(st)	2734	35	2136	169
Palia	kherwara(st)	776	1	775	67
Laxmipura	kherwara(st)	925	0	925	425
Khandiovri Uplaphala	kherwara(st)	2169	0	2092	33
Palsiya	kherwara(st)	1215	73	673	13
Karchha Kalan	kherwara(st)	2971	80	2103	24
Jhunthri	kherwara(st)	2464	15	1219	245
Bhilwara	kherwara(st)	488	0	488	42
Karmala	kherwara(st)	250	38	118	18
Rani	kherwara(st)	637	3	633	210
Parmarwara	kherwara(st)	857	39	804	20
Kharadiwara	kherwara(st)	2111	369	1533	205
Pahara	kherwara(st)	1303	692	388	228
Karawara	kherwara(st)	2980	68	563	17
Bao	kherwara(st)	1024	18	967	50
Dabaycha	kherwara(st)	1837	50	1684	94
Kharkaya	kherwara(st)	1436	0	1354	234
Boslathi	kherwara(st)	1444	0	1374	269
Bhomatawara	kherwara(st)	1298	0	1191	264
Juwarwa	kherwara(st)	1414	0	1387	364
Bhagorwara	kherwara(st)	1097	0	1093	23
Bhagorpara	kherwara(st)	821	0	817	753
Cheekli	kherwara(st)	460	0	457	3
Gurha	kherwara(st)	1559	1	1406	21
Jhjhri	kherwara(st)	1932	0	1902	772
Kadiya Nala	kherwara(st)	862	0	861	367
Demat	kherwara(st)	1227	0	1140	429
Adaghar	kherwara(st)	1231	2	1223	398
Babari	kherwara(st)	664	2	662	121
Bhanwa	kherwara(st)	539	0	534	13
Jayra	kherwara(st)	1771	14	1751	39
Sukhbaori	kherwara(st)	743	7	733	45
Kanbai Chak No. 2	kherwara(st)	317	0	317	2
Kanbai Chak No. 1	kherwara(st)	1513	123	1387	106

Kanbai	kherwara(st)	3786	307	3163	64
Sukhapara	kherwara(st)	1090	7	1083	44
Chandpura Narana	kherwara(st)	779	13	761	38
Anela	kherwara(st)	688	0	667	36
Sukhlal	kherwara(st)	1867	101	1720	31
Peepola	kherwara(st)	604	0	604	22
Hathiya	kherwara(st)	401	0	401	23
Ghati	kherwara(st)	1030	0	537	42
Ranawara	kherwara(st)	879	8	33	81
Kharadiwara	kherwara(st)	657	12	645	30
Thana	kherwara(st)	1456	392	129	74
Asariwara	kherwara(st)	1309	11	1295	103
Nayagaon	kherwara(st)	2146	348	741	19
Maheeda	kherwara(st)	1015	0	1	5
Chitaura	kherwara(st)	1560	17	1415	213
Dhanol	kherwara(st)	700	0	700	3
Chhani	kherwara(st)	2788	479	20	58
Modiwasa	kherwara(st)	697	24	672	27
Jaowali	kherwara(st)	130	0	78	34
Phutala	kherwara(st)	872	68	245	191
Bayri	kherwara(st)	1417	5	704	257
Sundara	kherwara(st)	800	0	585	73
Katewari	kherwara(st)	1157	91	665	36
		237909	7032	194686	35053