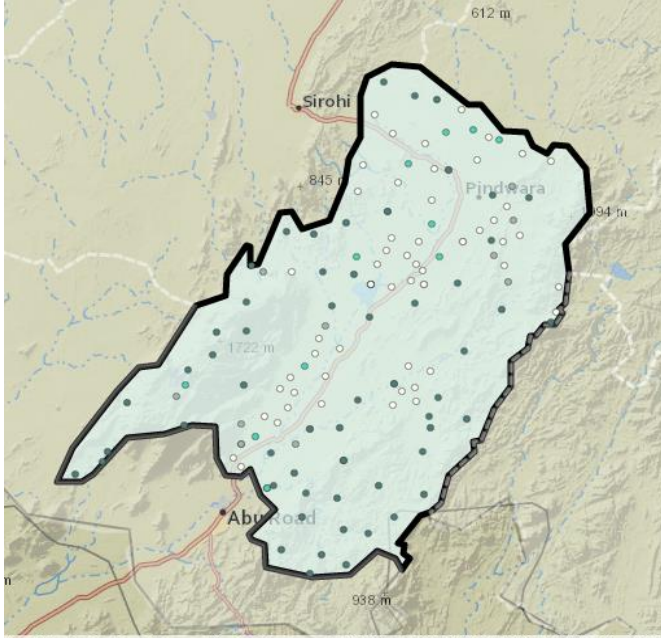


RAJASTHAN

PINDWARA ABU (ST) Assembly Constituency

Potential for Forest Rights Act Implementation



This map and list of villages eligible for forest rights (individual and collective) under the Forest Rights Act seeks to inform the political parties and candidates about the importance of proper implementation of Forest Rights Act in this tribal and forest dweller dominated constituency. All the forest land within village boundaries should be recognized as Community Forest Resource rights (CFRs) and individual forest rights (where occupancy prior to 2005 existed) rights under the control of FRA Gram Sabhas.

The list of villages includes the number of total potential right's holder, SC Right's holder and ST Right's holders under Forest Rights Act, and the area of forests (minimum) where FRA rights are to be recognized.

Villages with less than 50 ha. (125 acres) under FRA	
Villages between 50-100 ha. (125-250 acres) under FRA	
Villages with more than 100 ha. (> 250 acres) under FRA	

The winning margin was around 30,855 in 2013, whereas there are at least 94,805 Potential FRA Right Holder Voters eligible for FRA rights recognition. The electoral data clearly shows that the political parties need to raise the issue of Forest Rights Act implementation on the

ground.

Assembly Constituency FRA Potential Consolidated

Minimum number of villages having forests and eligible for FRA rights recognition	85
Total population of potential forest rights Act (FRA) rights holders in the Constituency	1,66,382
Number of Potential FRA right holder Voters Total	94,805
Number of potential SC FRA right holding Voters	6,325
Number of potential ST FRA right holding Voters	57,175
Total Area of forests eligible for recognition under Forest Rights Act	74,689 Ha

PINDWARA ABU: Election Results			
2013	BJP SAMARAM GRASIYA 61,453	INC GANGABEN GRASIYA 30,598	IND KESARMAL 9,746
2008	INC GANGA 40,018	BJP DURGARAM 36,672	BSP HARISINGH SATTAVAN 4,787

Village Wise List of the potential rights recognition under Forest Rights Act (IFR and CFR)

Village Name	Assembly Constituency Name	Total Village population	SC FRA Right Holder	ST FRA Right Holder	Minimum Forest Area Eligible for Rights Settlement (Ha) as IFRs or CFRs
Khari Gagarwa	pindwara abu (st)	315	7	303	1842
Viroli	pindwara abu (st)	1266	16	0	672
Siwera	pindwara abu (st)	2725	768	935	64
Kerlapadar	pindwara abu (st)	1201	63	1096	54
Veerwara	pindwara abu (st)	5537	1074	739	83
Bilar	pindwara abu (st)	244	0	231	147
Sadalwa	pindwara abu (st)	704	29	238	81
Sabela	pindwara abu (st)	1464	0	1462	465
Malap	pindwara abu (st)	1753	0	1752	24
Pindwara (Rural)	pindwara abu (st)	2650	123	1074	508
Varli	pindwara abu (st)	1819	25	1774	49
Pahar Kalan	pindwara abu (st)	248	0	238	6463
Malera	pindwara abu (st)	1795	1	1772	1
Navawas	pindwara abu (st)	133	0	133	13
Gadiya	pindwara abu (st)	564	1	563	105
Janapur	pindwara abu (st)	3727	708	199	94
Nandiya	pindwara abu (st)	5159	855	670	1186
Silwani	pindwara abu (st)	366	22	82	1
Lotana	pindwara abu (st)	2729	57	1957	1022
Kalabor	pindwara abu (st)	1129	1	1116	1850
Ker	pindwara abu (st)	1838	101	810	438
Isra	pindwara abu (st)	2777	276	1751	140
Ubera	pindwara abu (st)	286	0	41	21
Mandwara Khalsa	pindwara abu (st)	5287	337	3514	1107
Varki Khera	pindwara abu (st)	557	0	556	316
Apri Khera	pindwara abu (st)	2618	0	2591	60
Nai Jamin	pindwara abu (st)	933	0	255	60
Goliya	pindwara abu (st)	1283	295	26	36

Nitaura	pindwara abu (st)	5120	344	1244	157
Nanarwara	pindwara abu (st)	1228	196	229	5
Phoola Bai Ka Khera	pindwara abu (st)	2437	43	1830	81
Block No. 2	pindwara abu (st)	81	0	75	8905
Wara	pindwara abu (st)	1074	88	501	33
Bharja	pindwara abu (st)	4932	828	782	227
Taroongi	pindwara abu (st)	1837	185	867	213
Vatera	pindwara abu (st)	6205	557	2083	222
Kodarla	pindwara abu (st)	1491	166	581	112
Rampura	pindwara abu (st)	2003	278	810	301
Chawarli	pindwara abu (st)	1349	219	372	80
Basantgarh	pindwara abu (st)	9378	823	5032	2120
Moras	pindwara abu (st)	4525	5	4511	184
Waloriya	pindwara abu (st)	8685	0	8655	5466
Rohira	pindwara abu (st)	7661	985	816	728
Pipela	pindwara abu (st)	1822	42	1389	346
Bor Umri	pindwara abu (st)	407	2	382	571
Semli	pindwara abu (st)	1288	0	1287	2018
Nawawasa Khalsa	pindwara abu (st)	1288	0	1288	355
Sadaphali	pindwara abu (st)	655	0	650	231
Bhoola	pindwara abu (st)	6550	1	6509	1463
Oriya	pindwara abu (st)	1159	22	124	527
Achalgarh	pindwara abu (st)	343	104	65	92
Salgaon	pindwara abu (st)	554	4	142	48
Arna	pindwara abu (st)	220	0	28	228
Amthala	pindwara abu (st)	2811	182	1128	8
Mordu	pindwara abu (st)	1316	39	1175	2
Kyara	pindwara abu (st)	547	1	542	6
Mudrala	pindwara abu (st)	2509	147	1997	64
Kiwarli	pindwara abu (st)	3966	571	479	246
Sakoda	pindwara abu (st)	475	0	473	100
Fatehpura	pindwara abu (st)	1183	2	1171	150
Bahadurpura	pindwara abu (st)	1877	19	1723	424
Derna	pindwara abu (st)	962	27	278	59
Upala Derna	pindwara abu (st)	582	0	574	66
Toonka	pindwara abu (st)	888	8	879	124
Deldar	pindwara abu (st)	3505	394	2407	632
Tankiya	pindwara abu (st)	1055	0	1050	1391
Upala Tankiya	pindwara abu (st)	1467	0	1464	1605
Doytra	pindwara abu (st)	2927	3	2895	1829
Bori Booj	pindwara abu (st)	2218	2	2214	1000
Paba	pindwara abu (st)	2001	6	1988	1012
Nichla Khejra	pindwara abu (st)	1499	1	1494	1111
Jaydara	pindwara abu (st)	1037	15	1011	1186

Kyari	pindwara abu (st)	458	0	458	677
Nichlagarh	pindwara abu (st)	3079	20	2881	1258
Uplagarh	pindwara abu (st)	2694	7	2666	3251
Nichli Bor	pindwara abu (st)	601	0	601	551
Buja	pindwara abu (st)	876	1	875	526
Upla Khejra	pindwara abu (st)	1250	4	1227	1214
Rada	pindwara abu (st)	600	1	562	540
		165782	11101	100342	60649