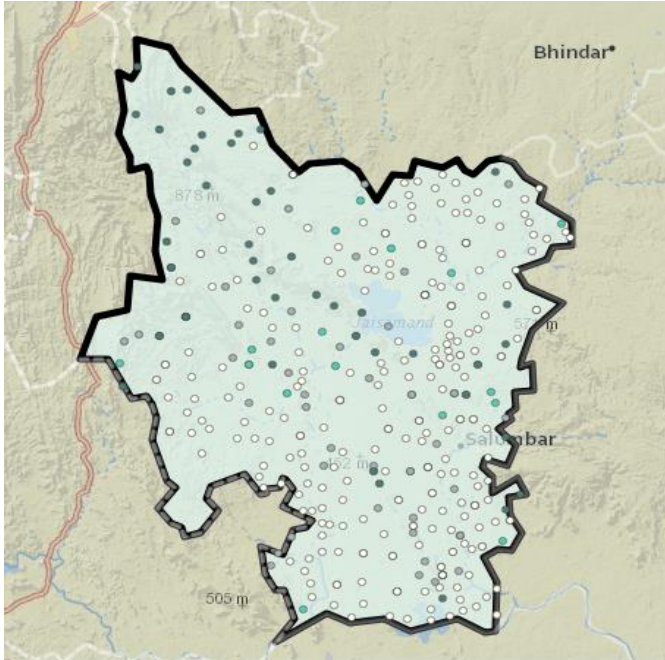


## RAJASTHAN

### SALUMBER (ST) Assembly Constituency

#### Potential for Forest Rights Act Implementation



This map and list of villages eligible for forest rights (individual and collective) under the Forest Rights Act seeks to inform the political parties and candidates about the importance of proper implementation of Forest Rights Act in this tribal and forest dweller dominated constituency. All the forest land within village boundaries should be recognized as Community Forest Resource rights (CFRs) and individual forest rights (where occupancy prior to 2005 existed) rights under the control of FRA Gram Sabhas.

The list of villages includes the number of total potential right's holder, SC Right's holder and ST Right's holders under Forest Rights Act, and the area of forests (minimum) where FRA rights are to be recognized.

Villages with less than 50 ha. (125 acres) under FRA	
Villages between 50-100 ha. (125-250 acres) under FRA	
Villages with more than 100 ha. (> 250 acres) under FRA	

The winning margin was around 36,651 in 2013, whereas there are at least 82,433 Potential FRA Right Holder Voters eligible for FRA rights recognition. The electoral data clearly shows that the political parties need to raise the issue of Forest Rights Act implementation on the

ground.

#### Assembly Constituency FRA Potential Consolidated

<b>Minimum number of villages having forests and eligible for FRA rights recognition</b>	<b>116</b>
<b>Total population of potential forest rights Act (FRA) rights holders in the Constituency</b>	<b>1,44,669</b>
<b>Number of Potential FRA right holder Voters Total</b>	<b>82,433</b>
<b>Number of potential SC FRA right holding Voters</b>	<b>3625</b>
<b>Number of potential ST FRA right holding Voters</b>	<b>50,774</b>
<b>Total Area of forests eligible for recognition under Forest Rights Act</b>	<b>23,616 Ha</b>

<b>SALUMBER: Election Results</b>			
<b>2013</b>	<b>BJP</b> AMRIT LAL 91,930	<b>INC</b> BASANTI 55,279	<b>NOTA</b> NONE OF THE ABOVE 5,267
<b>2008</b>	<b>INC</b> RAGUVEER SINGH 65,140	<b>BJP</b> NARENDRAKUMAR 41,787	<b>IND</b> DURGAPRASAD 6,081

**Village Wise List of the potential rights recognition under Forest Rights Act (IFR and CFR)**

<b>Village Name</b>	<b>Assembly Constituency Name</b>	<b>Total Village population</b>	<b>SC FRA Right Holder</b>	<b>ST FRA Right Holder</b>	<b>Minimum Forest Area Eligible for Rights Settlement (Ha) as IFRs or CFRs</b>
Dedkiya	salumber(st)	1442	5	1413	310
Ambuja	salumber(st)	1358	14	1284	730
Dakan Kotra	salumber(st)	2991	57	2221	674
Kharwa	salumber(st)	1544	52	1288	327
Jhali Ka Gurha	salumber(st)	942	60	865	163
Sathpur Meenan	salumber(st)	645	0	642	173
Chansda	salumber(st)	1380	66	861	594
Jodhpuriya	salumber(st)	613	0	613	113
Basu	salumber(st)	1497	124	635	401
Runeeja	salumber(st)	739	46	71	5
Phoota Pana	salumber(st)	584	2	571	272
Jagat	salumber(st)	3683	278	1857	385
Kheri	salumber(st)	1827	106	777	31
Dantisar	salumber(st)	979	73	136	60
Jamun	salumber(st)	352	8	321	26
Bambora	salumber(st)	3964	498	568	368
Satya Talai	salumber(st)	424	0	422	50
Gingla	salumber(st)	4589	223	509	58
Karawali	salumber(st)	2347	124	70	93
Arawela	salumber(st)	336	6	315	73
Upla Falan	salumber(st)	1549	27	1497	139
Dhawadi Magari	salumber(st)	770	0	769	2
Jailawata Phala	salumber(st)	1204	0	1202	4
Chatpur	salumber(st)	675	0	639	1
Bassee Samchot	salumber(st)	1777	157	149	32
Kherad	salumber(st)	1956	22	442	38
Bassee Singawat	salumber(st)	1340	225	33	426
Lakapa	salumber(st)	1240	0	1217	8
Bhai	salumber(st)	1090	61	1002	71

Isarwas Tapran	salumber(st)	664	91	295	49
Paya-Talab	salumber(st)	946	1	944	73
Nanga	salumber(st)	556	2	328	141
Rajpura	salumber(st)	924	1	923	108
Naya Gaon	salumber(st)	362	0	362	3
Kaluthara	salumber(st)	697	49	493	3
Nai Basti	salumber(st)	337	5	247	41
Tharoda	salumber(st)	873	107	260	7
Amara-Dungari	salumber(st)	1114	55	767	6
Pratappura	salumber(st)	338	9	259	158
Toda	salumber(st)	2032	1	666	100
Salaiya	salumber(st)	690	7	284	31
Khorao	salumber(st)	895	33	435	81
Deo-Gaon	salumber(st)	1390	136	243	195
Jharmal	salumber(st)	950	0	902	114
Bhanor	salumber(st)	875	0	875	193
Shesh-Pur	salumber(st)	1496	50	369	67
Sri Magri	salumber(st)	352	0	341	44
Bamaniya	salumber(st)	894	199	10	58
Joshi-Wara	salumber(st)	310	0	196	6
Khira-Wara	salumber(st)	792	104	155	22
Nokli	salumber(st)	913	21	638	3
Bandarwara	salumber(st)	431	22	137	39
Bara	salumber(st)	996	0	597	14
Babarmal	salumber(st)	1297	37	1245	801
Keora Kalan	salumber(st)	903	17	829	914
Keora Khurd	salumber(st)	1165	14	1143	986
Nakoli	salumber(st)	767	13	703	24
Eklingpura	salumber(st)	757	0	747	477
Oda	salumber(st)	1350	33	1279	752
Relan	salumber(st)	1245	21	1224	11
Padla	salumber(st)	2287	28	2136	843
Deopura	salumber(st)	3065	173	1813	423
Kathri	salumber(st)	1224	9	1215	154
Dhawadiya	salumber(st)	1062	48	297	12
Jariyana	salumber(st)	514	1	426	315
Nandvi	salumber(st)	354	0	353	29
Paluna	salumber(st)	863	0	863	413
Palodra	salumber(st)	2982	89	2408	315
Adwas	salumber(st)	3670	315	662	1265
Bagruwa	salumber(st)	1692	9	1483	926
Wailwari	salumber(st)	830	0	402	86
Naijhar	salumber(st)	1656	286	457	38
Magrawali Thori	salumber(st)	1190	78	643	68

Semal	salumber(st)	1459	96	366	5
Bhatwara	salumber(st)	5	0	5	19
Renth Guriya	salumber(st)	703	6	693	163
Veerpura	salumber(st)	2130	90	1027	463
Lalpuriya	salumber(st)	217	1	162	11
Pahari	salumber(st)	1337	65	1094	53
Bootwas	salumber(st)	1197	47	1147	43
Gatonr	salumber(st)	3067	131	2727	463
Nala Phala	salumber(st)	648	31	617	57
Gamri	salumber(st)	1606	1	1605	151
Jamboora	salumber(st)	718	2	715	344
Mahuri	salumber(st)	542	3	248	520
Shyampura	salumber(st)	1303	30	798	72
Chandaji Ka Gura	salumber(st)	581	12	507	9
Peeladar	salumber(st)	1152	97	121	403
Sarsiya	salumber(st)	2635	117	2517	21
Karma Talab	salumber(st)	1694	13	1681	498
Kalat	salumber(st)	2139	0	2133	962
Nathara	salumber(st)	1071	35	1036	920
Delwas	salumber(st)	2332	3	2251	257
Vijaynagar	salumber(st)	352	0	352	176
Jhalardevi	salumber(st)	329	0	328	19
Khori Mahuri	salumber(st)	1795	1	1788	19
Lalpura	salumber(st)	686	134	531	4
Thana	salumber(st)	813	233	41	83
Moondla	salumber(st)	655	0	640	73
Deengri	salumber(st)	1623	78	724	112
Dhani Melana	salumber(st)	1284	115	894	28
Kerpura	salumber(st)	352	0	352	7
Behuti	salumber(st)	1093	0	774	32
Sekri	salumber(st)	146	11	8	43
Mayar	salumber(st)	1010	18	646	83
Kejar	salumber(st)	3677	309	1498	9
Parsad	salumber(st)	4271	185	2407	1172
Naliya Wara	salumber(st)	838	2	747	51
Partaliya	salumber(st)	157	0	61	20
Lalapuriya	salumber(st)	1062	0	1033	2
Shyampurua	salumber(st)	878	63	0	9
Darjanpura	salumber(st)	484	0	207	29
Rathora	salumber(st)	2370	134	1183	77
		142948	6361	89107	23516