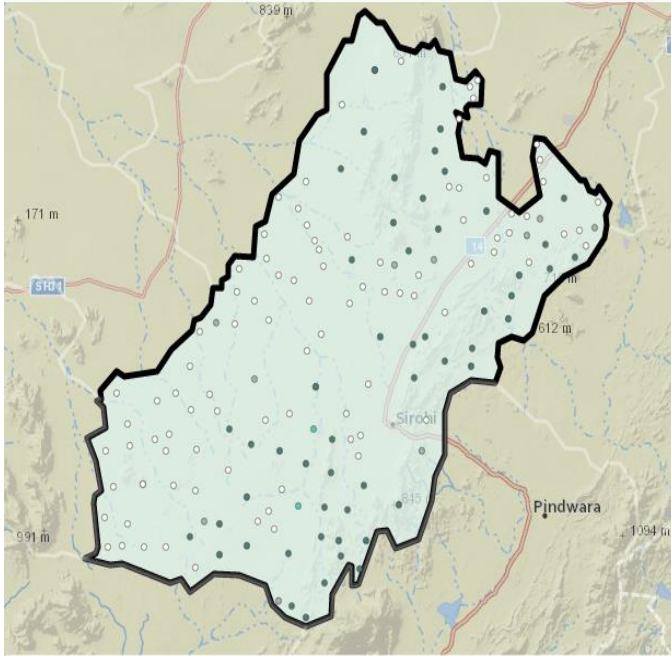


RAJASTHAN

SIROHI Assembly Constituency

Potential for Forest Rights Act Implementation



This map and list of villages eligible for forest rights (individual and collective) under the Forest Rights Act seeks to inform the political parties and candidates about the importance of proper implementation of Forest Rights Act in this tribal and forest dweller dominated constituency. All the forest land within village boundaries should be recognized as Community Forest Resource rights (CFRs) and individual forest rights (where occupancy prior to 2005 existed) rights under the control of FRA Gram Sabhas.

The list of villages includes the number of total potential right's holder, SC Right's holder and ST Right's holders under Forest Rights Act, and the area of forests (minimum) where FRA rights are to be recognized.

The winning margin was around 24,439 in 2013, whereas there are at least 73,716 Potential FRA Right Holder Voters eligible for FRA rights recognition. The electoral data clearly shows that the political parties need to raise the issue of Forest Rights Act implementation on the ground.

Villages with less than 50 ha. (125 acres) under FRA	
Villages between 50-100 ha. (125-250 acres) under FRA	
Villages with more than 100 ha. (> 250 acres) under FRA	

Assembly Constituency FRA Potential Consolidated

Minimum number of villages having forests and eligible for FRA rights recognition	70
Total population of potential forest rights Act (FRA) rights holders in the Constituency	1,29,371
Number of Potential FRA right holder Voters Total	73,716
Number of potential SC FRA right holding Voters	16,690
Number of potential ST FRA right holding Voters	11,679
Total Area of forests eligible for recognition under Forest Rights Act	45,089 Ha

SIROHI: Election Results			
2013	BJP OTARAM 82,098	INC SANYAM LODHA 57,659	IND TRIKAMARAM 4,254
2008	BJP OTARAM 56,400	INC SANYAM LODHA 47,830	BSP UGAMRAJ RAWAL 3,959

Village Wise List of the potential rights recognition under Forest Rights Act (IFR and CFR)

Village Name	Assembly Constituency Name	Total Village population	SC FRA Right Holder	ST FRA Right Holder	Minimum Forest Area Eligible for Rights Settlement (Ha) as IFRs or CFRs
Manadar	sirohi	4779	884	550	889
Devnagar	sirohi	683	83	55	383
Rowara	sirohi	1914	493	442	2790
Gola	sirohi	461	86	19	160
Alpa	sirohi	2392	542	818	657
Jhadoli	sirohi	2672	611	177	918
Taleta	sirohi	994	26	391	1071
Jogapura	sirohi	3265	418	923	200
Posaliya	sirohi	6821	1232	1419	175
Mochhal	sirohi	904	88	471	711
Van	sirohi	2035	563	228	709
Kailashnagar @ Las	sirohi	8384	2053	671	272
Oda	sirohi	2341	489	251	168
Andor	sirohi	2460	493	142	18
Sagaliya	sirohi	1082	289	265	236
Bhaiv	sirohi	2398	795	458	239
Arathwara	sirohi	5375	1201	299	1
Bar Gaon	sirohi	5747	2168	698	156
Kukri Khera	sirohi	138	0	115	13
Phachariya	sirohi	27	0	27	197
Khejariya	sirohi	1926	380	670	7
Surajpura	sirohi	385	8	130	12
Dhrubana	sirohi	1062	100	425	527
Kana Kolar	sirohi	845	25	275	782
Sikkhon Ka Jor	sirohi	3	0	3	528
Chooli	sirohi	1220	246	136	841
Radbar	sirohi	1276	385	142	1341
Choteela	sirohi	1208	131	482	564

Chhiba Gaon	sirohi	1806	211	195	1853
Bagseen	sirohi	3057	604	324	38
Kolar	sirohi	26	2	12	175
Vera Vilpur	sirohi	1109	271	31	188
Palri	sirohi	6152	1342	487	434
Kaldari	sirohi	1293	11	1086	1108
Baravera	sirohi	552	0	443	1288
Devon Ka Bera	sirohi	712	0	313	594
Vadakhara	sirohi	33	0	19	4305
Padeev	sirohi	4998	1423	241	131
Nawara	sirohi	1653	344	11	18
Kalandri	sirohi	10158	2388	496	10
Angore	sirohi	1076	342	10	81
Khambal	sirohi	2191	1081	181	128
Sarneshwarji	sirohi	910	4	425	2210
Rajpura	sirohi	1526	83	463	33
Sirohi (Rural)	sirohi	334	0	18	5335
Sindrath	sirohi	2261	883	219	380
Mamawali	sirohi	1471	399	47	315
Siloiya	sirohi	1527	136	179	400
Sartara	sirohi	999	365	106	642
Valdara	sirohi	1377	285	127	598
Balda (V)	sirohi	1353	668	15	2282
Vadeli	sirohi	685	63	170	68
Rajpura Khera	sirohi	146	36	68	135
Dhanta	sirohi	1785	732	88	851
Mankroda	sirohi	2124	829	227	386
Darbari Khera	sirohi	849	14	667	351
Meerpur	sirohi	1246	325	330	757
Padroo Khera	sirohi	231	17	0	285
Siyakara	sirohi	820	184	0	13
Sanpur	sirohi	1897	509	107	815
Amla	sirohi	612	204	28	620
Krishnganj	sirohi	4700	1322	291	645
Telpi Khera	sirohi	1552	9	1050	480
Churlikhera	sirohi	937	22	912	512
Udwaria	sirohi	1968	385	279	12
Padroo Khera	sirohi	94	8	0	213
Bari Khera	sirohi	151	0	150	725
		129168	29290	20497	43980